

# Appendix 1

**Leaves and Needles** – where photosynthesis takes place.

**Roots** – collect nutrients and water; anchors the tree; communicates with other trees.

**Trunk** – stores carbon; transports materials such as water and nutrients.

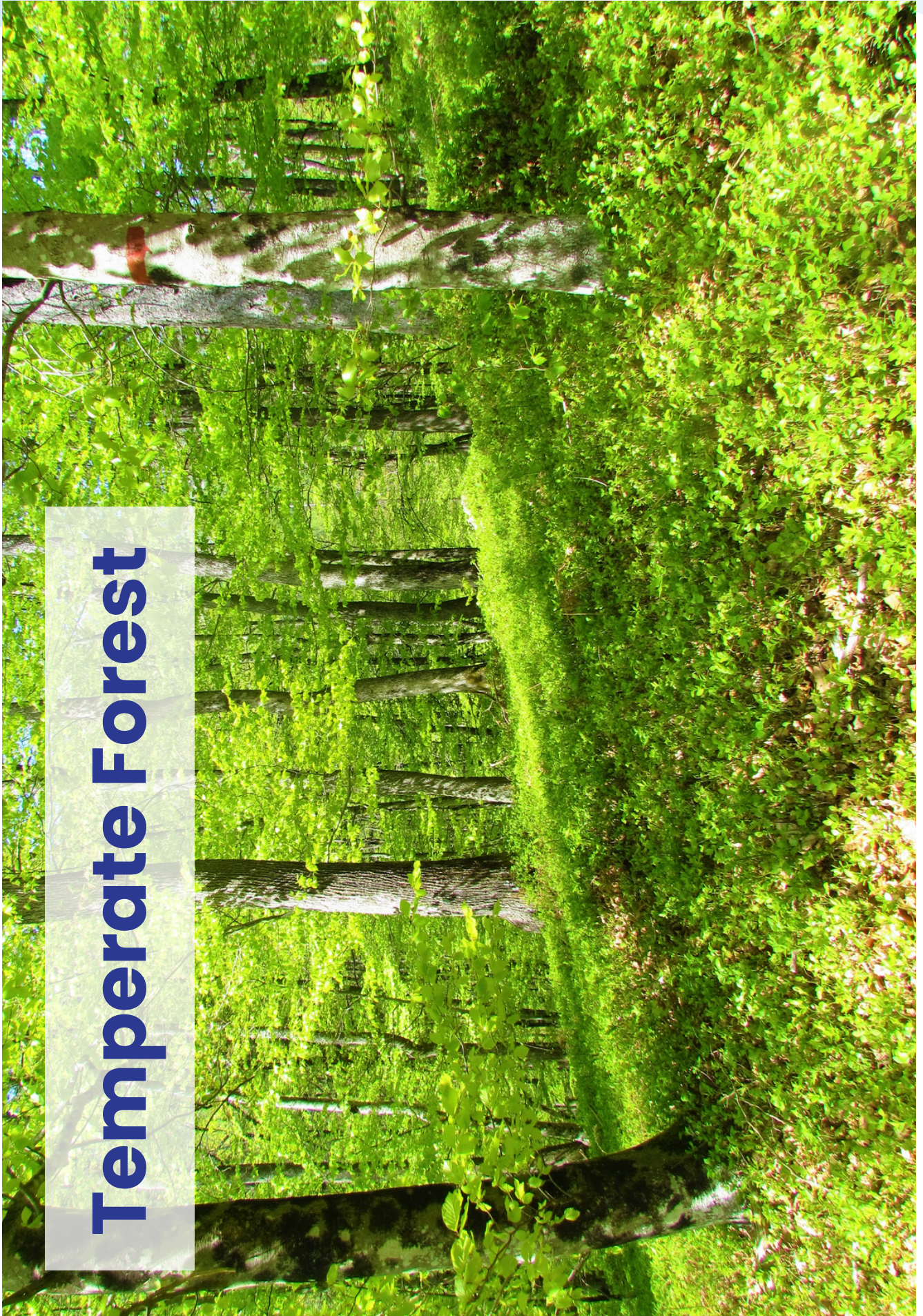
**Branches and Twigs** – support structure for leaves, flowers and fruit.

**Flowers** – reproduction.



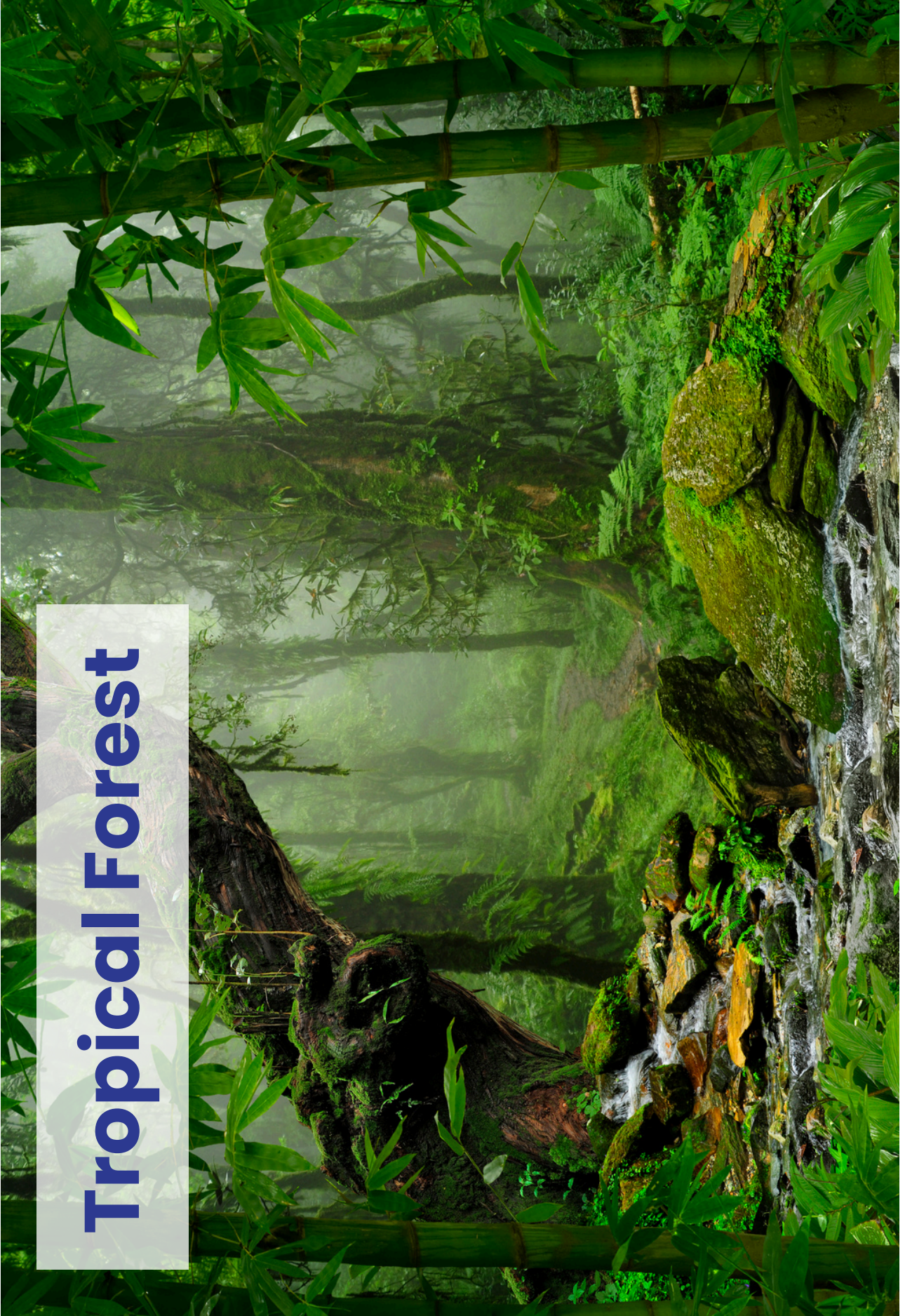


# Temperate Forest





# Tropical Forest







# Boreal Forest



# Appendix 3

## Reindeer



My food can be buried deep under the snow.

Adaptation:

---

---

---

## Snowshoe Hare



I am the prey of lots of different animals.

Adaptation:

---

---

---



## Crossbill



Nuts and seeds can be hard to reach in the winter months.

Adaptation:

---

---

---

## Great Grey Owl



It can be difficult to spot my prey, especially in winter.

Adaptation:

---

---

---



## Canada Lynx



It is easy to sink in snow when you walk on it.

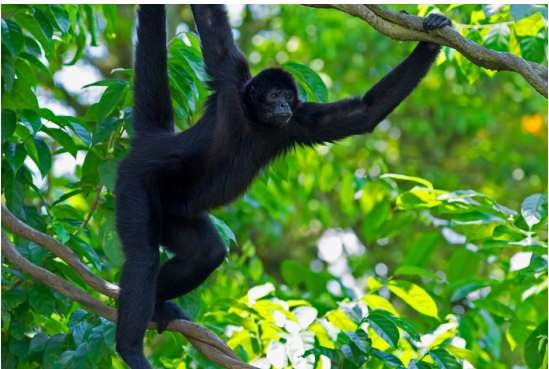
Adaptation:

---

---

---

## Spider Monkey



I have to travel long distances through the trees to find enough fruit to eat.

Adaptation:

---

---

---



# Toucan



The fruit I eat hangs off branches  
I am too heavy to land on.

Adaptation:

---

---

---

# Poison Dart Frog



I don't want predators to eat me.

Adaptation:

---

---

---



# Sloth



I don't want to be spotted by predators.

Adaptation:

---

---

---

# Anaconda



I need to be able to see and breathe when swimming across rivers.

Adaptation:

---

---

---



# Great Spotted Woodpecker



The insects I eat live in trees.

Adaptation:

---

---

---

# Red Squirrel



I need to keep warm during the rain and snow.

Adaptation:

---

---

---



# Hedgehog



I need to deter predators.

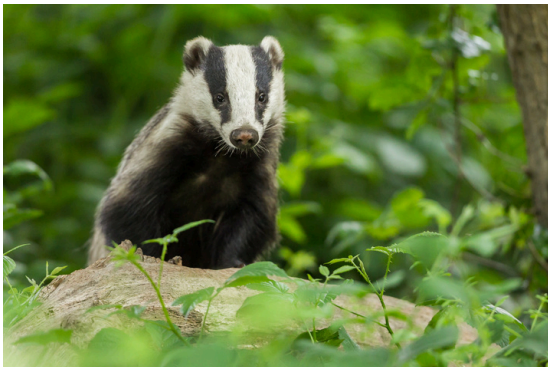
Adaptation:

---

---

---

# Badger



I eat insects who live underground. I also live in a set underground.

Adaptation:

---

---

---



# Black Bear



I need to move or bend large objects like rocks and tree trunks to find food.

Adaptation:

---

---

---

## Answers:

### Forest Habitat

**Boreal Forest** – reindeer, snowshoe hare, crossbill, great grey owl, Canada lynx.

**Temperate Forest** – spider monkey, toucan, poison dart frog, sloth, anaconda.

**Tropical Forest** – great spotted woodpecker, red squirrel, hedgehog, badger, black bear.



## Adaptations

**Reindeer** – sharp hooves used as shovels to dig in the snow to find food.

**Snowshoe hare** – white fur to camouflage with the snow.

**Cross-bill** – large, sharp beak to break open and extract seeds from cones.

**Great grey owl** – large eyes to pick out prey in a snowy environment.

**Canada lynx** – wide, padded, furry paws that act like snowshoes to stop the lynx sinking into the ground.

**Spider monkey** – long, strong limbs so they can easily swing through the trees.

**Toucan** – a long, large beak to reach and cut fruit from lighter branches.

**Poison dart frog** – bright coloured skin warns predators not to eat it.

**Sloth** – camouflaged to the trees to make it difficult to spot.

**Anaconda** – nose and eyes located on the top of their heads to help them see and breathe when swimming.



**Great spotted woodpecker** – long, strong sharp beak to create holes in trees to reach insects.

**Red squirrel** – large, bushy tail to wrap round itself to keep warm in the rain or snow.

**Hedgehog** – sharp prickles to protect it from predators.

**Badger** – sharp claws to help them dig underground.

**Black bear** – large, strong legs and paws to help them move heavy objects.